



Pilkington Way, Cradley Heath, B64

£1,450 PCM

Regis Park presents a collection of nearly 100 high-quality homes, offering a range of 2 to 4-bedroom properties suited to all stages of life. Whether you're a first-time renter, growing family, or downsizer, these thoughtfully designed homes provide comfort and style in equal measure.

Delightful. That's the Dee. Inside this beautiful four bedroom home, the ground floor offers a large living room designed for comfort and relaxation. Go down the hallway past the WC and storage space, and you're straight into the gorgeous kitchen/dining area with its integrated appliances and contemporary units. Lovely French windows open straight out onto your own private garden. Ideal for enjoying the sunshine and a bit of outdoor dining and entertaining.

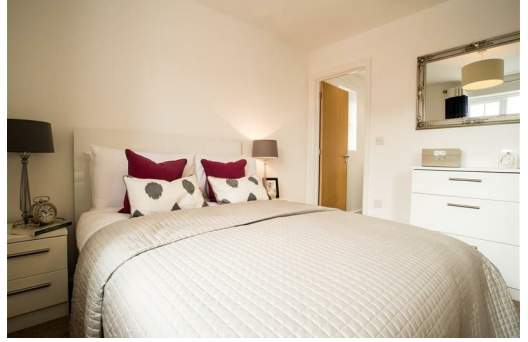
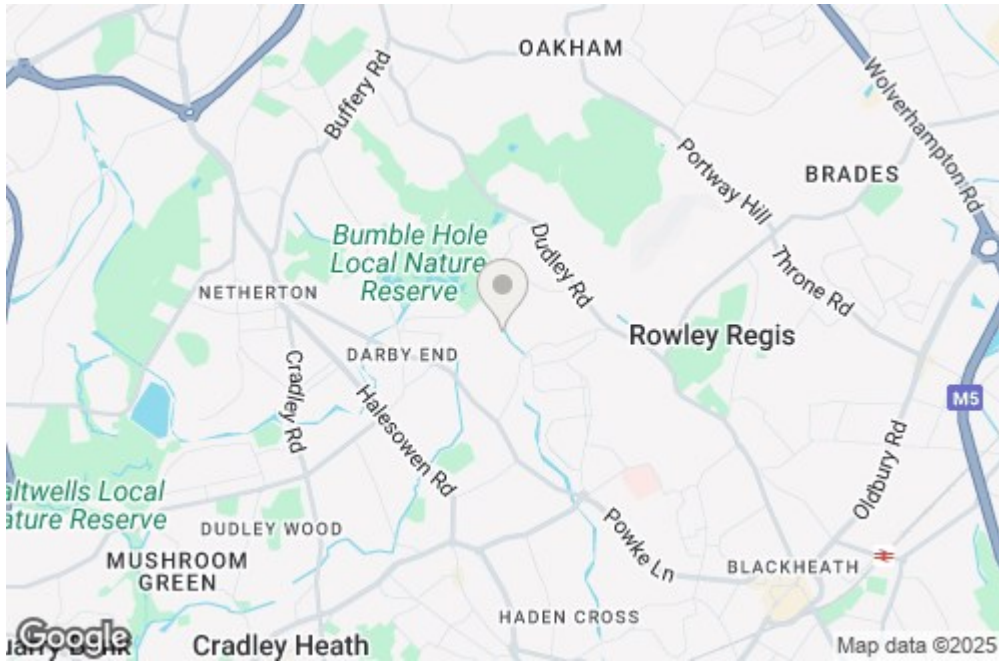
Upstairs, you'll find two double bedrooms including the master bedroom with built-in wardrobes and en-suite bathroom plus two single rooms, and a gorgeous family sized bathroom fitted out in stylish white. Built to high standards, the Dee offers plenty of security with a fitted alarm system and Secure by Design windows and doors.

Situated just a few miles from supermarkets, shopping centres, and local towns, residents enjoy the convenience of nearby amenities while staying connected to the wider region. Several excellent primary and secondary schools are also close by, while the nearby M5 ensures easy access for commuters and those exploring the surrounding areas.

Deposit: £1670
Unfurnished
Council Tax: C
Available 19th January 2026



54 Pilkington Way, Cradley Heath, West Midlands, B64 5RB



Energy Efficiency Rating		Environmental Impact (CO ₂) Rating	
Current	Potential	Current	Potential
85	95	B	B
Property's energy efficiency - based on energy costs 100-109 A 81-100 B 69-80 C 55-68 D 39-54 E 22-54 F 1-22 G		Property's environmental friendliness - based on CO ₂ emissions 100-109 A 81-100 B 69-80 C 55-68 D 39-54 E 22-54 F 1-22 G	
100-109 A 81-100 B 69-80 C 55-68 D 39-54 E 22-54 F 1-22 G		100-109 A 81-100 B 69-80 C 55-68 D 39-54 E 22-54 F 1-22 G	